



Beaufort County Public Works
Stormwater Infrastructure
Project Summary

Project Summary: St. Helena Island Vacuum Truck
 McTeer Drive, Chisholm Road, Tombee Road, Wards Landing Road, Harbor
 Breeze Drive, Bay Point Road, Sea Pines Road, Lands End Road, Levant Byas
 Road, Mattis Drive, Renell Road

Activity: Routine/Preventive Maintenance
Duration: 08/21/17-11/30/17

Narrative Description of Project:

Project improved 292 L.F. of drainage system. Cleaned out (18) catch basins. Jetted (1) driveway pipe, (2) access pipes, (11) crossline pipes and 292 L.F. of channel pipe.

2018-309 / St Helena Island Vacuum Truck	Labor Hours	Labor Cost	Equipment Cost	Material Cost	Contractor Cost	Indirect Labor	Total Cost
APJT / Access pipe - jetted	8.0	\$178.24	\$34.72	\$25.30	\$0.00	\$114.72	\$352.98
AUDIT / Audit Project	0.5	\$10.90	\$0.00	\$0.00	\$0.00	\$0.00	\$10.90
CBCO / Catch basin - clean out	80.0	\$1,782.40	\$347.20	\$218.39	\$0.00	\$1,147.20	\$3,495.19
CLPJT / Crossline Pipe - Jetted	22.0	\$490.16	\$95.48	\$86.32	\$0.00	\$315.48	\$987.44
CPJ / Channel Pipe - Jetted	12.0	\$267.36	\$62.88	\$50.91	\$0.00	\$172.08	\$553.23
2018-309 / St Helena Island Vacuum Truck Sub Total	122.5	\$2,729.06	\$540.28	\$380.92	\$0.00	\$1,749.48	\$5,399.73
Grand Total	122.5	\$2,729.06	\$540.28	\$380.92	\$0.00	\$1,749.48	\$5,399.73

Before

During

After



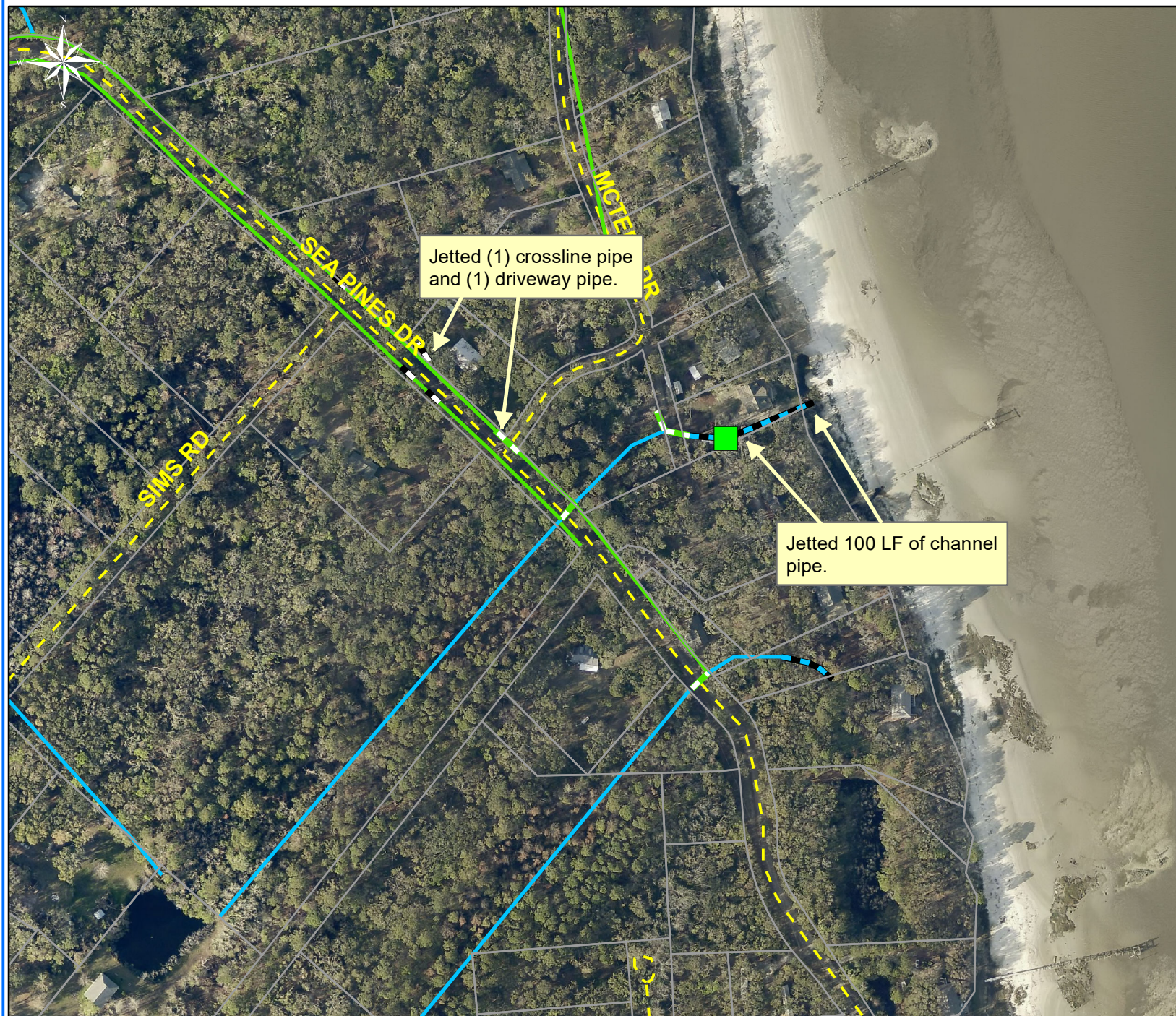
Project: St. Helena
Island Vacuum
Truck- McTeer
Drive and Sea
Pines Dirve
Map #1

Activity: Routine/
Preventive
Maintenance

Project #:
2018-309

Township/SW Dist:
St. Helena Island/8

Completed:
November 2017



Legend

Drainage Type

- Access Pipe
- Bleeder Pipe
- Channel Pipe
- Channel
- Stream
- Crossline Pipe
- Driveway Pipe
- Lateral
- Lateral Pipe
- River
- Road Pipe
- Roadside
- Roadside Pipe

0 60 120 240 360 480
Feet

1 inch = 250 feet

Prepared By: BC Stormwater Management Utility

Date Print: 03/29/18

File: C:\project summaries map\St. Helena Island Vac Truck- McTeer Drive Map#1_2018-309



Project: St. Helena
Island Vacuum
Truck-Chisholm
Road
Map #2

Activity: Routine/
Preventive
Maintenance














Project #:
2018-309

Township/SW Dist:
St. Helena Island/8

Completed:
November 2017

Legend

Drainage Type

-  Access Pipe
-  Bleeder Pipe
-  Channel Pipe
-  Channel
-  Stream
-  Crossline Pipe
-  Driveway Pipe
-  Lateral
-  Lateral Pipe
-  River
-  Road Pipe
-  Roadside
-  Roadside Pipe

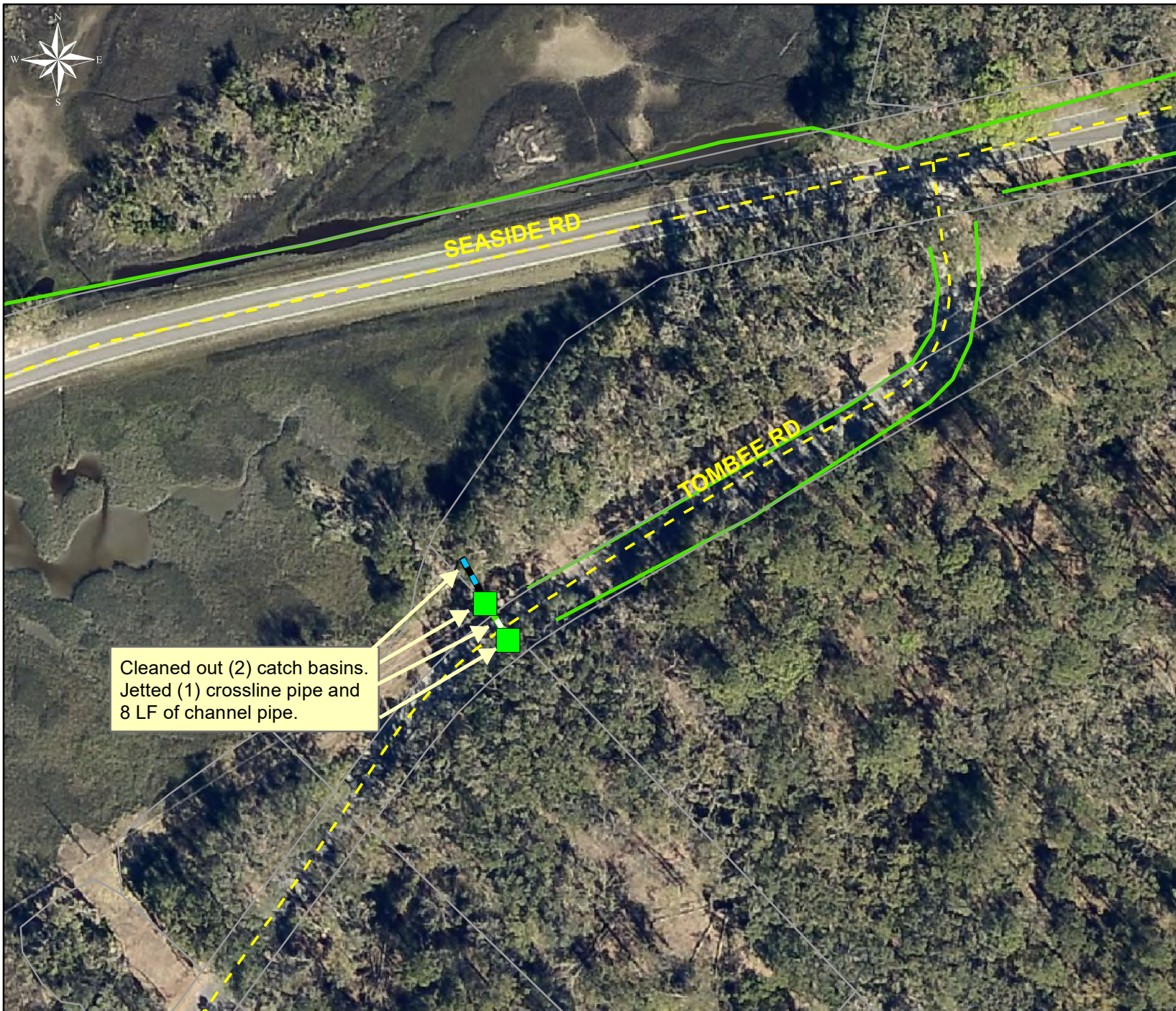
0 20 40 80 120 160
Feet

1 inch = 83 feet

Prepared By: BC Stormwater Management Utility

Date Print: 03/29/18

File: C:\project summaries map\St. Helena Island Vac Truck- Chisholm Road Map#2_2018-309



Project: St. Helena
Island Vacuum
Truck- Tombee
Road
Map #3

Activity: Routine/
Preventive
Maintenance

Project #:
2018-309

Township/SW Dist:
St. Helena Island/8

Completed:
November 2017

Legend

Drainage Type

- Access Pipe
- Bleeder Pipe
- Channel Pipe
- Channel
- Stream
- Crossline Pipe
- Driveway Pipe
- Lateral
- Lateral Pipe
- River
- Road Pipe
- Roadside
- Roadside Pipe

0 20 40 80 120 160
Feet

1 inch = 83 feet

Prepared By: BC Stormwater Management Utility

Date Print: 03/29/18

File: C:\project summaries map\St. Helena Island Vac Truck- Tombee Road Map#3_2018-309



Project: St. Helena
Island Vacuum
Truck- Wards
Landing Road
Map #4

Activity: Routine/
Preventive
Maintenance

Project #:
2018-309

Township/SW Dist:
St. Helena Island/8

Completed:
November 2017

Legend

Drainage Type

- Access Pipe
- Bleeder Pipe
- Channel Pipe
- Channel
- Stream
- Crossline Pipe
- Driveway Pipe
- Lateral
- Lateral Pipe
- River
- Road Pipe
- Roadside
- Roadside Pipe

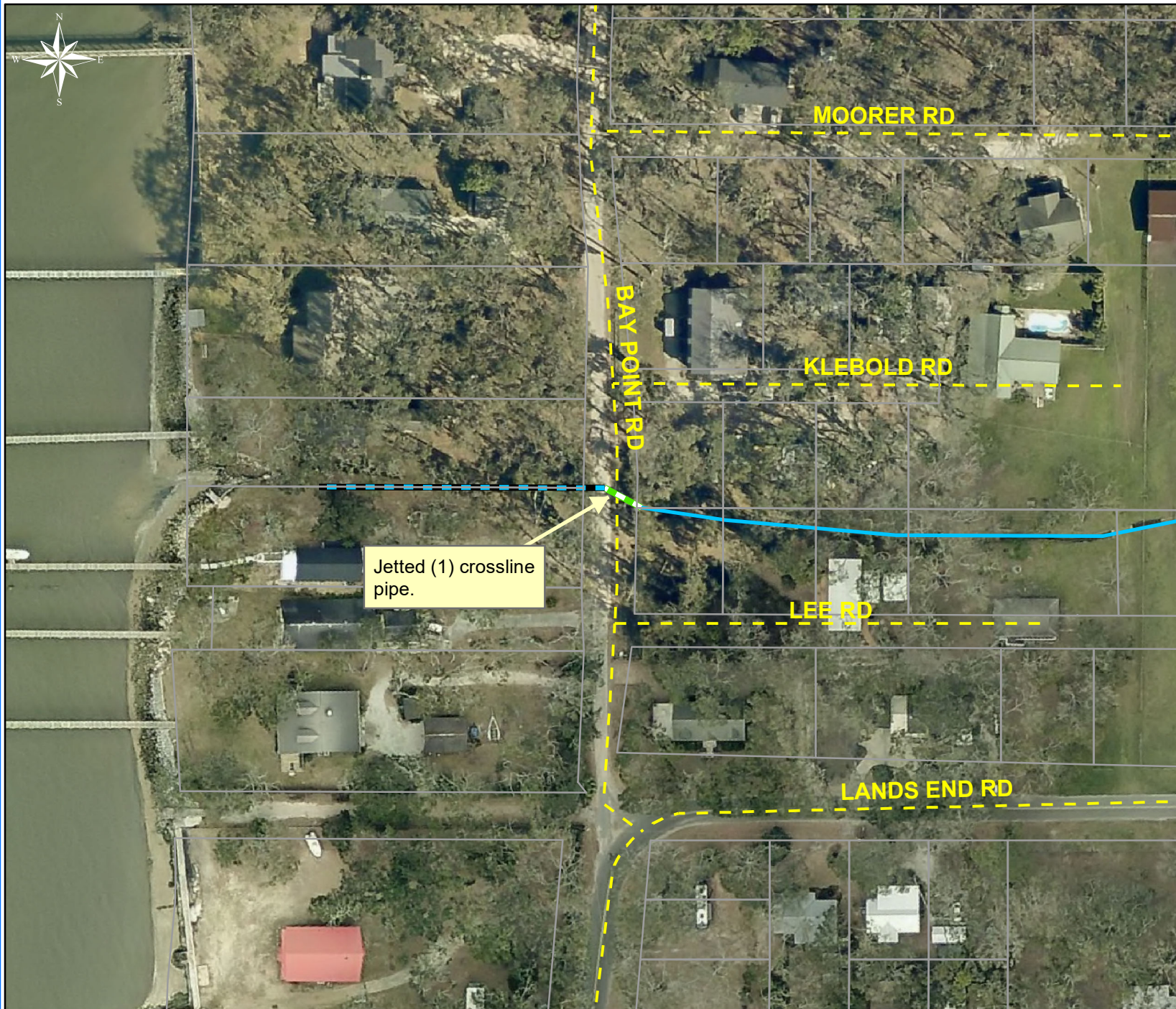
0 60 120 240 360 480
Feet

1 inch = 250 feet

Prepared By: BC Stormwater Management Utility

Date Print: 03/29/18

File: C:\project summaries map\St. Helena Island Vac Truck- Wards Landing Rd Map #4_2018-309



Project: St. Helena
Island Vacuum
Truck- Bay Point
Road
Map #5

Activity: Routine/
Preventive
Maintenance














Project #:
2018-309

Township/SW Dist:
St. Helena Island/8

Completed:
November 2017

Legend

Drainage Type

-  Access Pipe
-  Bleeder Pipe
-  Channel Pipe
-  Channel
-  Stream
-  Crossline Pipe
-  Driveway Pipe
-  Lateral
-  Lateral Pipe
-  River
-  Road Pipe
-  Roadside
-  Roadside Pipe

0 25 50 100 150 200
Feet

1 inch = 100 feet

Prepared By: BC Stormwater Management Utility

Date Print: 06/25/18

File: C:\project summaries map\St. Helena Island Vac Truck- Bay Point Rd Map #5_2018-309



Project: St. Helena
Island Vacuum
Truck- Renell
Road
Map #6

Activity: Routine/
Preventive
Maintenance

Project #:
2018-309

Township/SW Dist:
St. Helena Island/8

Completed:
November 2017

Legend

Drainage Type

- Access Pipe
- Bleeder Pipe
- Channel Pipe
- Channel
- Stream
- Crossline Pipe
- Driveway Pipe
- Lateral
- Lateral Pipe
- River
- Road Pipe
- Roadside
- Roadside Pipe

0 40 80 160 240 320
Feet

1 inch = 170 feet

Prepared By: BC Stormwater Management Utility

Date Print: 06/25/18

File: C:\project summaries map\St. Helena Island Vac Truck- Renell Rd Map #6_2018-309



Project: St. Helena
Island Vacuum
Truck- Lands End
Road
Map #7

Activity: Routine/
Preventive
Maintenance

Project #:
2018-309

Township/SW Dist:
St. Helena Island/8

Completed:
November 2017

Legend

Drainage Type

- Access Pipe
- Bleeder Pipe
- Channel Pipe
- Channel
- Stream
- Crossline Pipe
- Driveway Pipe
- Lateral
- Lateral Pipe
- River
- Road Pipe
- Roadside
- Roadside Pipe

0 40 80 160 240 320
Feet

1 inch = 170 feet

Prepared By: BC Stormwater Management Utility

Date Print: 03/29/18

File: C:\project summaries map\St. Helena Island Vac Truck- Lands End Road Map #7_2018-309



Project: St. Helena
Island Vacuum
Truck- Levant Byas
Road
Map #8

Activity: Routine/
Preventive
Maintenance

Project #:
2018-309

Township/SW Dist:
St. Helena Island/8

Completed:
November 2017

Legend

Drainage Type

- Access Pipe
- Bleeder Pipe
- Channel Pipe
- Channel
- Stream
- Crossline Pipe
- Driveway Pipe
- Lateral
- Lateral Pipe
- River
- Road Pipe
- Roadside
- Roadside Pipe

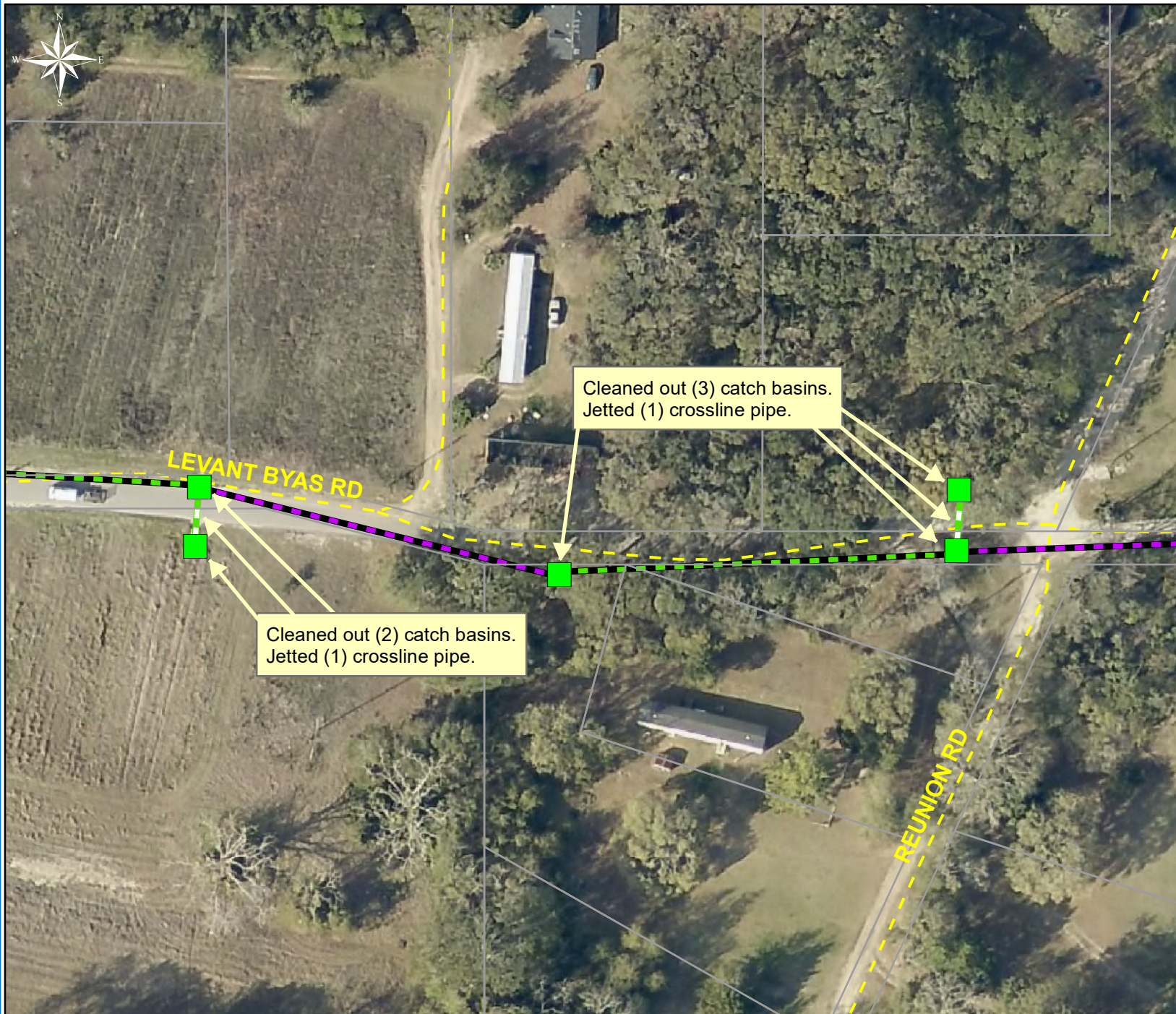
0 25 50 100 150 200
Feet

1 inch = 100 feet

Prepared By: BC Stormwater Management Utility

Date Print: 03/29/18

File: C:\project summaries map\St. Helena Island Vac Truck- Levant Byas Road Map #8_2018-309



Project: St. Helena
Island Vacuum
Truck- Levant Byas
Road
Map #9

Activity: Routine/
Preventive
Maintenance














Project #:
2018-309

Township/SW Dist:
St. Helena Island/8

Completed:
November 2017

Legend

Drainage Type

-  Access Pipe
-  Bleeder Pipe
-  Channel Pipe
-  Channel
-  Stream
-  Crossline Pipe
-  Driveway Pipe
-  Lateral
-  Lateral Pipe
-  River
-  Road Pipe
-  Roadside
-  Roadside Pipe

0 20 40 80 120 160
Feet

1 inch = 83 feet

Prepared By: BC Stormwater Management Utility

Date Print:03/29/18

File:C:\project summaries map/St. Helena Island Vac Truck- Levant Byas Road Map #9_2018-309



Project: St. Helena
Island Vacuum
Truck- Mattis
Drive
Map #10

Activity: Routine/
Preventive
Maintenance














Project #:
2018-309

Township/SW Dist:
St. Helena Island/8

Completed:
November 2017

Legend

Drainage Type

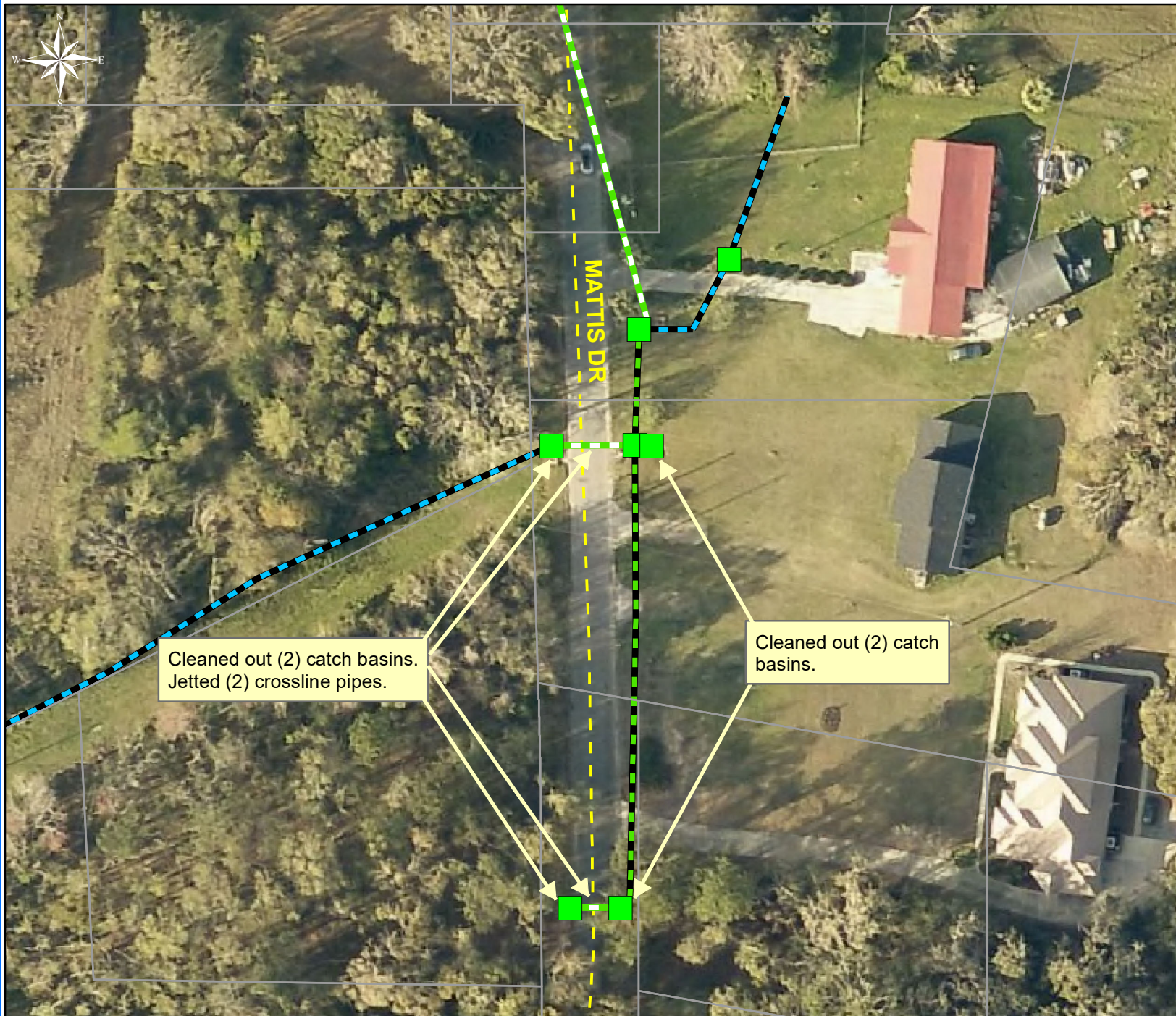
-  Access Pipe
-  Bleeder Pipe
-  Channel Pipe
-  Channel
-  Stream
-  Crossline Pipe
-  Driveway Pipe
-  Lateral
-  Lateral Pipe
-  River
-  Road Pipe
-  Roadside
-  Roadside Pipe

0 50 100 200 300 400
Feet

1 inch = 210 feet

Prepared By: BC Stormwater Management Utility
Date Print: 03/29/18

File: C:\project summaries map\St. Helena Island Vac Truck- Mattis Drive Map #10_2018-309



Project: St. Helena
Island Vacuum
Truck- Mattis
Drive
Map #11

Activity: Routine/
Preventive
Maintenance

Project #:
2018-309

Township/SW Dist:
St. Helena Island/8

Completed:
November 2017

Legend

Drainage Type

- Access Pipe
- Bleeder Pipe
- Channel Pipe
- Channel
- Stream
- Crossline Pipe
- Driveway Pipe
- Lateral
- Lateral Pipe
- River
- Road Pipe
- Roadside
- Roadside Pipe

0 15 30 60 90 120
Feet

1 inch = 67 feet

Prepared By: BC Stormwater Management Utility
Date Print: 03/29/18

File: C:\project summaries map\St. Helena Island Vac Truck- Mattis Drive Map #11_2018-309